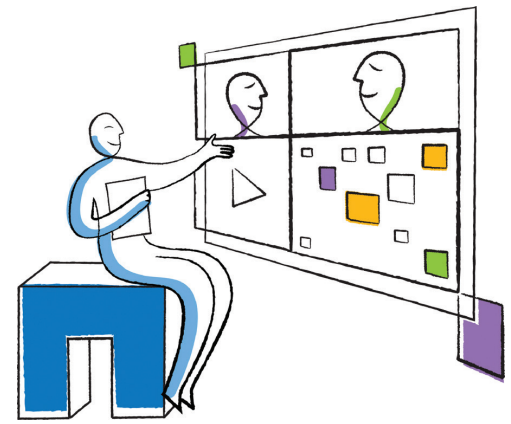




NetApp®



## Solution Brief

# NetApp and MXFserver

Broadcast video platform for Avid, FCP, and Adobe

### KEY BENEFITS

#### Efficient Shared Media Editing

- Supports Ethernet for compressed editing
- Supports Fibre Channel for uncompressed editing
- Enables many users to share same media simultaneously with bin locking
- Let you merge projects without copying media
- Enables you to set and track projects with built-in workflow and search tools

#### Native Editing with No File Conversions

- Additional project management
- Easily back up, copy, and move entire projects

#### Improved Storage Efficiency and Footprint

- Industry-leading bandwidth per dollar and per U
- Dense capacity when needed: 240TB (60 x 4TB) in 4U
- Total 192 disk drives possible
- Reduced space, power, cooling, and management costs
- RAID 6 resiliency with no performance cost

### Solution Overview

Build out collaborative editing environments with cost-effective enterprise-class open storage. No longer do editing facilities need to be locked into expensive application-specific storage. MXFserver enables Avid®, Adobe® Premiere Pro™, and Apple® Final Cut Pro™ editing platforms to be consolidated onto efficient and cost-effective scalable NetApp® storage. The biggest advantage of the MXFserver is that it is a nonproprietary system and therefore doesn't work with hidden media indexes and databases. Due to MXFserver's open structure, all media can be easily accessed, transferred, managed, and exchanged without the use of additional software. It improves project manageability while supporting all the project sharing and bin locking you're used to.

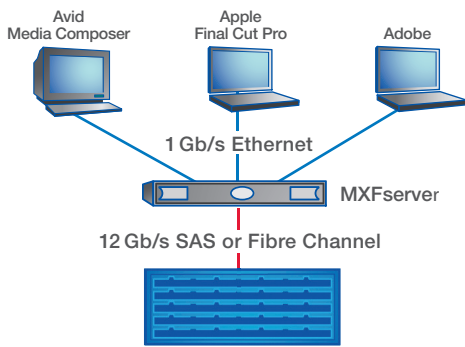
MXFserver sets up editing in projects, creating virtual shares for high-speed simultaneous editing and enabling you to share and merge media without copying or converting. The system offers an operating layer for project management and project sharing in a familiar and unified way for all three

editing platforms. Its transparent software layer allows businesses to put standard IT servers in play to support file sharing and management. Companies can now choose from a range of standard IT servers for speed and connectivity.

The MXFserver interface shows the amount of storage in use and the quota for each project. Either the IT-support operator or the client can add extra storage, which shows on the project's budget. A project's storage budget can be downsized if needed and storage returned to the general storage pool.

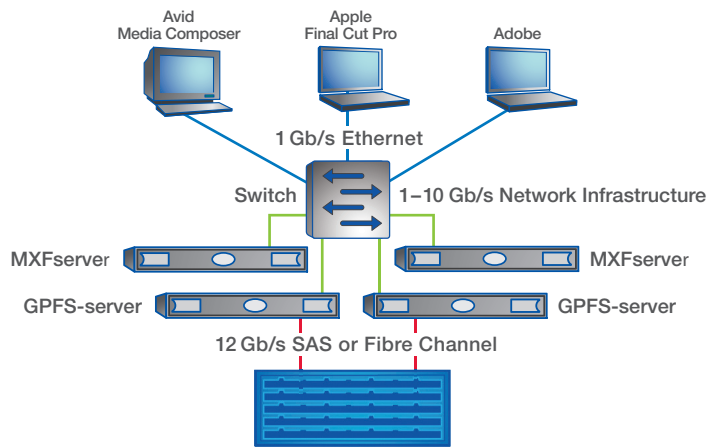
MXFserver shows each project as a separate Microsoft® Windows® directory to the IT manager. This type of organization offers many options for moving and managing media. Temporary backing up and restoring take just a mouse-click by any IT operator and copying a project to a portable disk for editing elsewhere is just a simple copy process. All of these media operations can be controlled from within a Microsoft Windows 2008 R2 server and are open to XML commands.

MXFserver's client desktop is intuitive, and user accounts provide access control to projects. Additional memos



#### Small Workgroup System

- 2RU E2712 4TB disks—balanced for capacity
- 2RU E2724 900 GB disks—balanced for performance



#### Large Workgroup System

- 4RU E2760 4TB disks—balanced for capacity
- 4RU E2760 900 GB disks—balanced for performance
- Global Parallel File System

Figure 1) NetApp MXFserver system configurations can be architected for small networked workgroups up to large hybrid SAN and NAS environments.

and metadata are accessible along with any important information the prior editor left.

#### Why Choose NetApp?

E-Series systems are fast, highly reliable, and surprisingly cost effective, and they excel at collaborative multilayer editing. For small workgroups and live events choose a 2RU E2712 or E2724. For large post production workgroups choose a 4RU E2760. Multi-MXFserver deployments can be scaled out with the use of Global Parallel File System.

- Simplified deployment, administration, and management lower the total cost of ownership.
- You can scale up or out for additional capacity, bandwidth or both without downtime.
- World-class local support and installation services are available around the globe, providing quick and high-quality solution maintenance.
- Bandwidth and capacity density reduces space, power, and cooling costs.
- Enterprise-class scalability, resilience, and flexibility allow non-disruptive expansion.

#### Why Choose FilmPartners MXFserver?

MXFserver not only lets numerous users share the same media. It also lets you connect to several projects at the same time for final editing. Also, there is no need for copying or converting, nor is there a need to consolidate a project before it moves to final editing. This not only saves time but in final editing all of the media is still available for last-minute changes. Need to lengthen a scene? It is as simple as pulling on the timeline and the media is there.

#### Specifications Version 4.6

##### Software

- MXFserver (service) for Windows 2008 R2 or 2012 standard.
- MXFserver client for windows workstations on XP 32/64, Vista® 32/64, Windows 7 32-/64-bit, Windows Server 2012 64-bit
- MXFserver client for Apple Mac® OS X Lion and Mountain Lion Mavericks

##### Server

- Windows Server® 2008 R2 64-bit
- Windows Server 2012 std or ent.

##### Editing systems

- Avid Media Composer 5, 6 and 7 on Windows and Mac

- Avid Adrenaline (ingest and play-out)
- Apple Final Cut Pro 7 on Mac
- Avid Pro Tools 8, 9, 10 and 11 on Mac and Windows with MXF support
- Merging Technologies Pyramix 7 and VCube 3
- Adobe Premiere CC and CS6 on Windows and Mac
- Adobe After Effects on Mac/Windows

##### Formats

- All Avid-supported MXF formats
- FCP: All FCP QuickTime-supported formats or MXF through plug-in (MXF4MAC)
- Adobe: All MXF- and QuickTime-supported formats for Premiere
- Mixed formats of MXF and QuickTime can be supported in the same project at the same time.

#### About NetApp

NetApp creates innovative storage and data management solutions that deliver outstanding cost efficiency and accelerate business breakthroughs. Discover our passion for helping companies around the world go further, faster at [www.netapp.com](http://www.netapp.com).

Go further, faster®

